

FLOOR FRAME LAYOUT

Trusstech SA Pty Ltd

ABN: 40 1 3 18 22 140 16 High Street Dry Creek SA 5094 Ph: 08 8260 6006



OAKRIDGE
BUILDING SERVICES

Ph : 83637222
Fax : 83637225

FLOOR TRUSSES: SJ-400 @ 600 CTRS GENERALLY UNO
WET AREA JOISTS: SJ-355 @ 450 CTRS GENERALLY UNO
BALCONY JOISTS: SJ-310 @ 450 CTRS GENERALLY UNO
FLOORING: 22mm PARTICLE BOARD
19mm SCLON SECURA TO W/A & BALCONY LEDGER
PLATE: 120x35 MCP10 TO ENDS
FLOOR BEARER JOINTS FIXED WITH 4/1 50mm BUGLE
SCREWS UNO
WITH 2 M16 BOLTS & 40mm
SQUARE WASHER TO EACH SIDE

ALL MATERIALS ALLOWED AS PER AS 1684.2-2010
JOINT GROUP= JD5
TRUSSES & BRACING TO BE INSTALLED, ERECTED
& BRACED IN ACCORDANCE WITH AS4440-2004
NOTE: TRUSSES & JOISTS TO BE POSITIONED
DIRECTLY OVER STUDS
UNLESS SHOWN OTHERWISE ON LAYOUT, NO
SPECIAL LOADS HAVE BEEN ALLOWED.
EG - SPA BATHS, HOT WATER SYSTEMS ETC.

WET AREA DETAILS
THE WET AREA SHEET FLOORING MUST BE LAID IN
STRICT ACCORDANCE WITH THE RECOMMENDATIONS
BY JAMES HARDIE. REFER TO THE BATHROOM
COMPRESSED SHEET DETAILS.
* ALLOW WALL PLATETIMBER INFILL FOR FLOOR TRUSS
CONNECTIONS TO STEEL BEAMS
* FLOOR TRUSSES fixed to bearers using
STRUT HANGER 180x180x90 throughout
X = INTERNAL SUPPORT / CANTILEVER POINT

BOTTOM PLATE FIXING DETAILS

2 NAILING PLATES EACH
END OF BRIDGING, LEGS
NOT BENT, WITH 6/2.0mm
NAILS TO EACH FACE

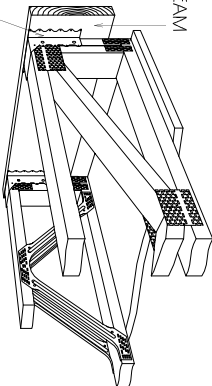
90x45 BRIDGING
PLATE ON EDGE

BOLT AS PER TABLE

FLOOR TRUSSES

M10 BOLT - 12 kN M12 BOLT - 15 kN

STRUT HANGER 180x180x90 SUPPORTING
NORMAL FLOOR LOADS - FIXING DETAIL



MIN 4/30x2.0mm NAILS REFER TO TABLE BELOW

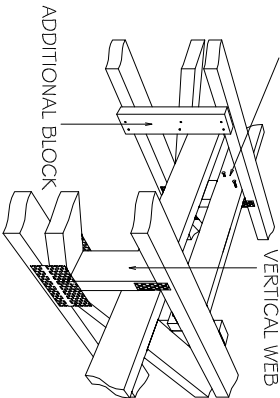
NO. OF NAILS PER WING	FLOOR TRUSSES SPAN (mm)
4 NAILS	2500
6 NAILS	3900
8 NAILS	5000
10 NAILS	6400
12 NAILS	7700

STRONGBACK

NON-ALIGNED STRONGBACKS
600mm MAX APART

2 / 3.15x75 NAILS

VERTICAL WEB

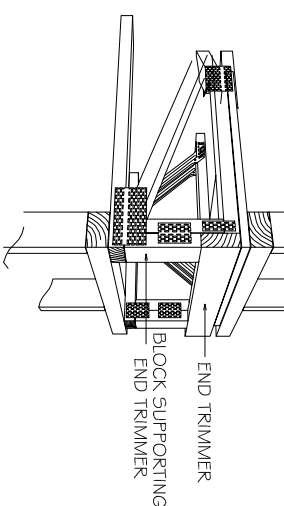


ADDITIONAL BLOCK

END BLOCKING

FIX END TRIMMER TO EACH FLOOR
TRUSS WITH 2 / 3.15x75 NAILS

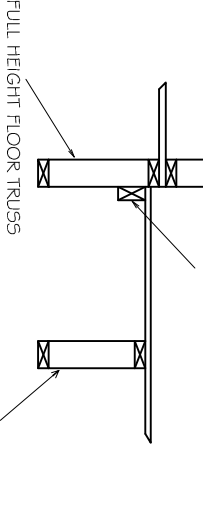
LOAD BEARING WALL



WET AREA SET DOWN LEDGER DETAIL

UPPER WALL FRAME

90x45 MCP10 TRIMMER NAILED
TO FLOOR TRUSSES TO SUPPORT
WET AREA FLOORING

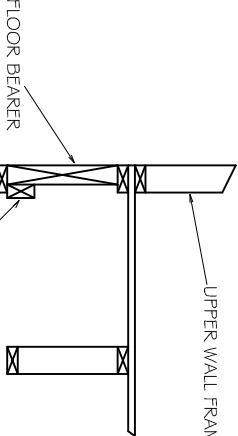


FULL HEIGHT FLOOR TRUSSES

WET AREA SET DOWN TRUSSES

FLOOR BEARER CEILING TRIMMER DETAIL

UPPER WALL FRAME

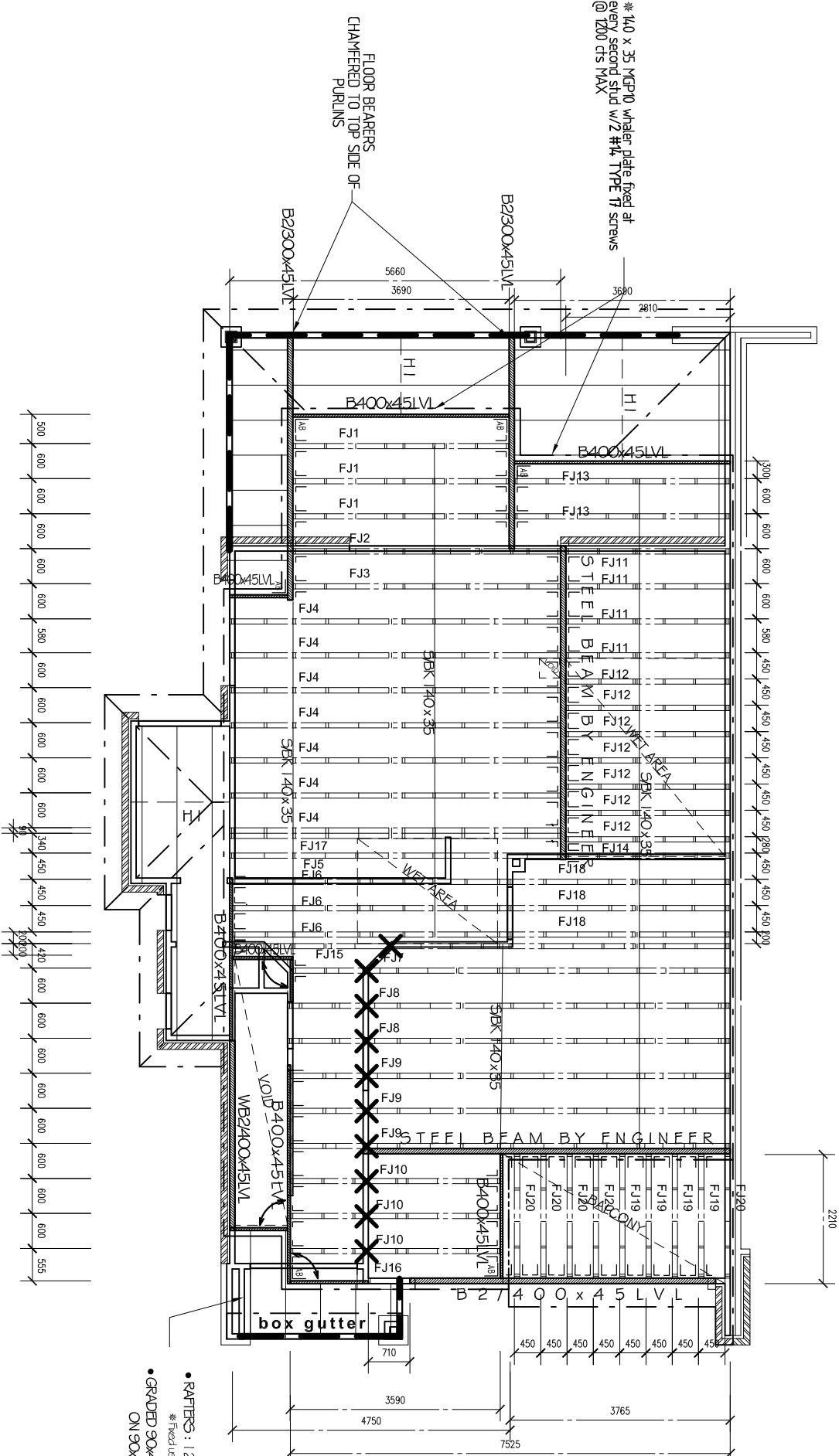


90x45 MCP10 CEILING TRIMMER
FIXED TO SIDE OF BEAM

DWELLING 1

SPECIFICATIONS:	Joist Type:	SpanJoist	Spacing:	600	Customer: DEDICATED DEVELOPMENT PTY LTD Site Address: 638 BURBRIDGE RD, WEST BEACH	SHEET 25
Structure:	House	Flooring:	Particle	Dist. Live Load:		Date: 12/02/2019
Floor Appl:	General Areas	Flooring Size:	3600x900x22	Concat. Point Load:		Scale: 1 : 100
Wind Speed:	N1	Ceiling:	Plaster 10mm Supa Span	Timber:	Dry Swd (can include KD Hwd) HO	Job No: TT02397

S:\OAKRIDGE TAKEOFFS\DEDICATED DEVELOPMENTS\638 BURBRIDGE RD\DWLG 1\DWLG 1 638 BURBRIDGE RD.dwg



- R rafters : 120 x 35 MCP10 @ 600mm cts
* Fixed using framing brackets FB35120
- GRADED 90x45 MCP10 PURINS @900 cts
ON 90x35 SOLDIERS @ MAX 3m cts